



# INDOFINE Chemical Company, Inc.

121 Stryker Lane, Bldg. 30, Suite 1 • Hillsborough, NJ 08844 • U.S.A.

Phone: (908) 359-6778 • FAX: (908) 359-1179

website: [www.indofinechemical.com](http://www.indofinechemical.com)

e-mail: [chemical@indofinechemical.com](mailto:chemical@indofinechemical.com)

## CERTIFICATE OF ANALYSIS

Catalog Number: 26-2813

Product Name: **4-CHLORO-4'-FLUOROCHALCONE**

CAS Number: [28081-12-1]

Lot Number: 0512116

Chemical Formula: C<sub>15</sub>H<sub>10</sub>ClFO

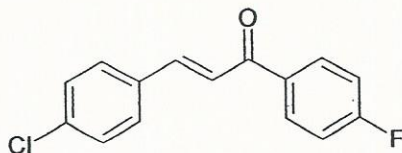
Molecular Weight: 260.70

Melting Point: 136-137°C

Appearance: White powder

Storage: Store in a cool, dry place

Purity(HPLC): 99+%





# INDOFINE Chemical Company, Inc.

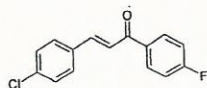
121 Stryker Lane, Bldg. 30, Suite 1 • Hillsborough, NJ 08844 • U.S.A.

Phone: (908) 359-6778 • FAX: (908) 359-1179

website: [www.indofinechemical.com](http://www.indofinechemical.com)

e-mail: [chemical@indofinechemical.com](mailto:chemical@indofinechemical.com)

## HPLC ANALYSIS



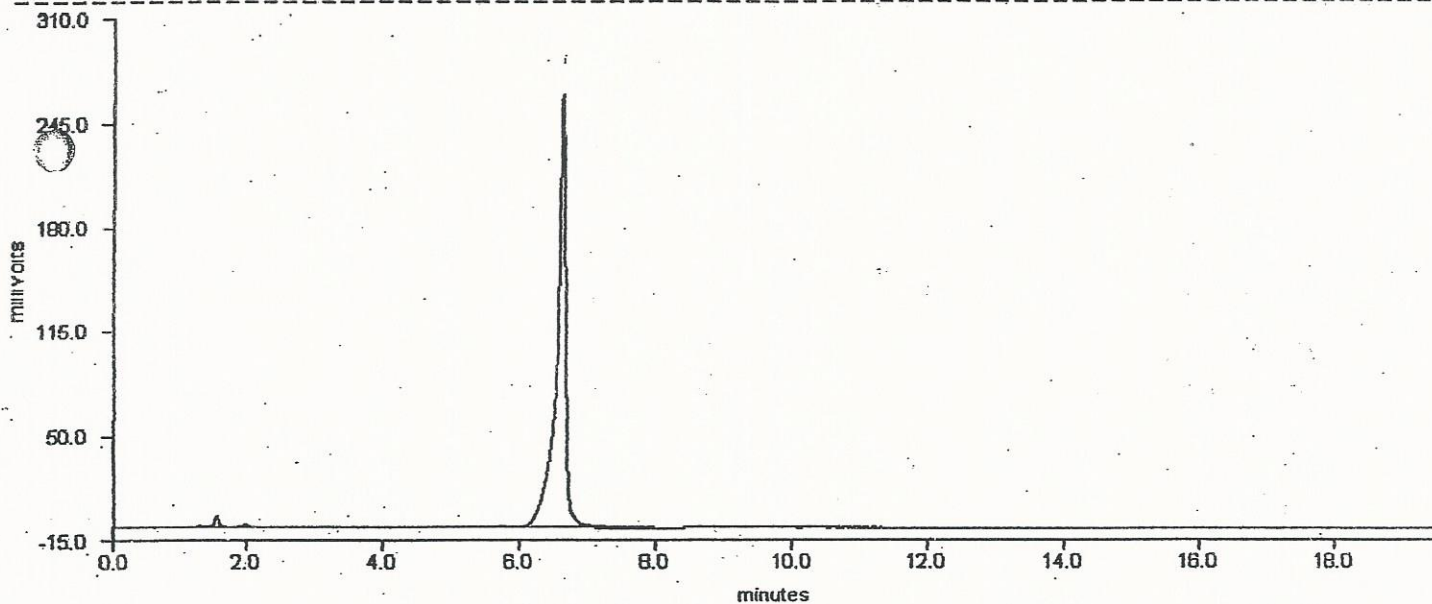
Catalog No.: 26-1813  
Product Name: 4-Chloro-4'-fluorochalcone  
Lot No.: 0512116

FLOW RATE : 1.5ml/Min  
MOBILE PHASE : ACETONITRILE : WATER (70:30)

WAVELENGTH : 254nm  
COLUMN : C18(250X4.6mm)

DELTA CHROMATOGRAPHY DATA SYSTEM

STRIPCHART PLOT FOR CHROMATOGRAM - c:\deltaw\data\np-09036.raw



DELTA CHROMATOGRAPHY DATA SYSTEM

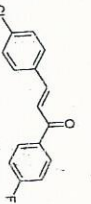
LISTING PEAK TABLE FOR CHROMATOGRAM - c:\deltaw\data\np-09036.raw.RAW

#	Type Name	Ret.Time	Area(uVSec)	Height(mV)	Area Percent
1	MM	1.57	9814	3.6	0.4
2	MM	1.98	2599	1.1	0.1
3	MM	5.75	5649	0.7	0.2
4	PB	6.63	2575241	270.5	99.3

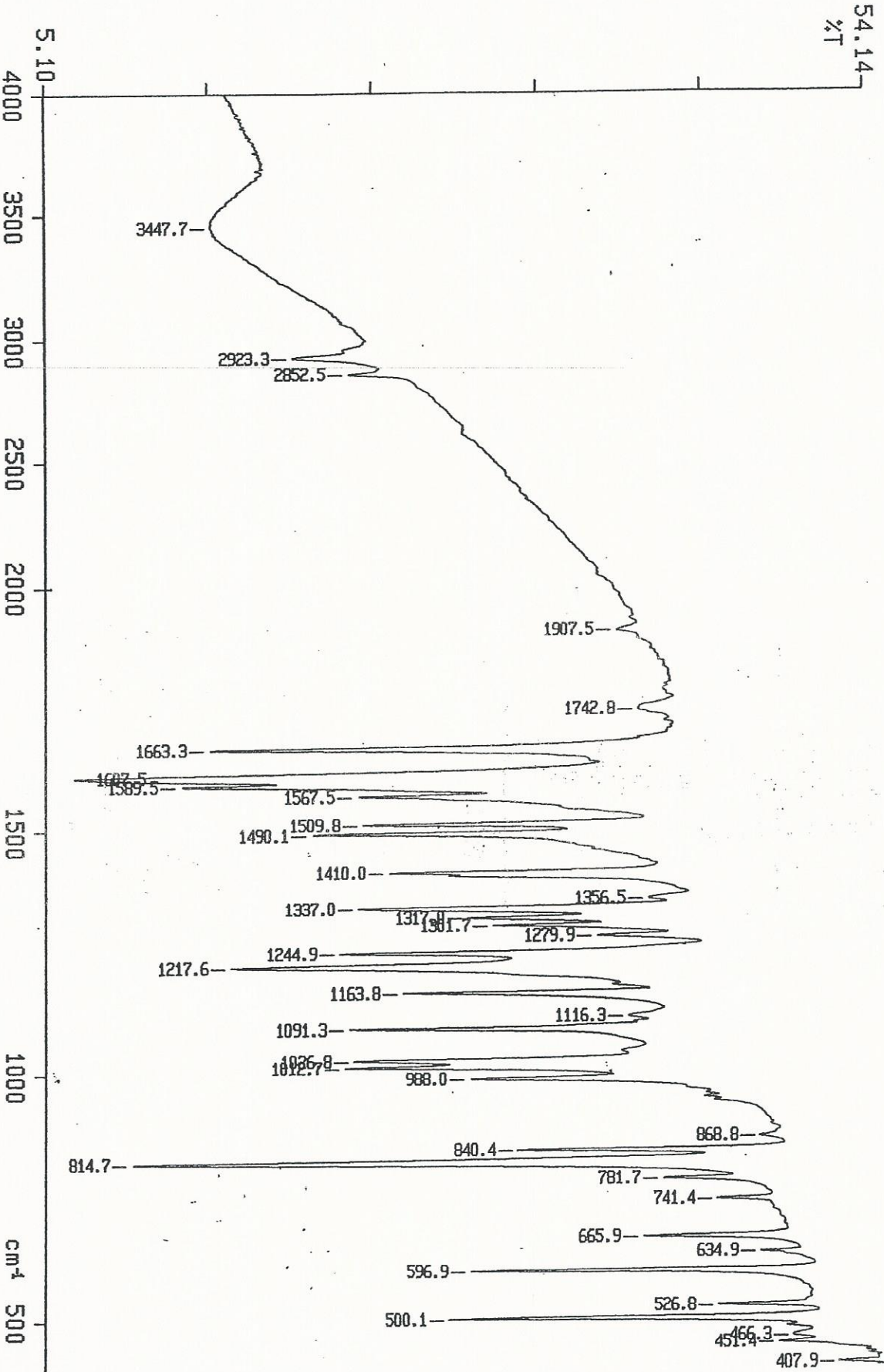


PERKIN ELMER

INDOFINE Chemical Company, Inc.  
121 STRYKER LANE  
BLDG. 30, SUITE 1  
HILLSBOROUGH, NJ 08844



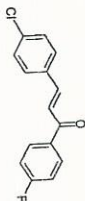
Catalog No.: 26-1813  
Product Name: 4-Chloro-4'-fluorochalcone  
Lot No.: 0512116



X: 1 scan, 4.0cm-1



**INDOFINE Chemical Company, Inc.**  
121 STRYKER LANE  
BLDG. 30, SUITE 1  
HILLSBOROUGH, NJ 08844



Catalog No.: 26-1813  
Product Name: 4-Chloro-4'-fluorochalcone  
Lot No.: 0512116

Pulse Sequence: s2pu1

